

# CERTIFICATE OF LOCATION OF GOVERNMENT CORNER

NORTHEAST Corner of Section 27, Township 105 N., Range 42 W., 5 th P.M.

STATE OF MINNESOTA, County of MURRAY

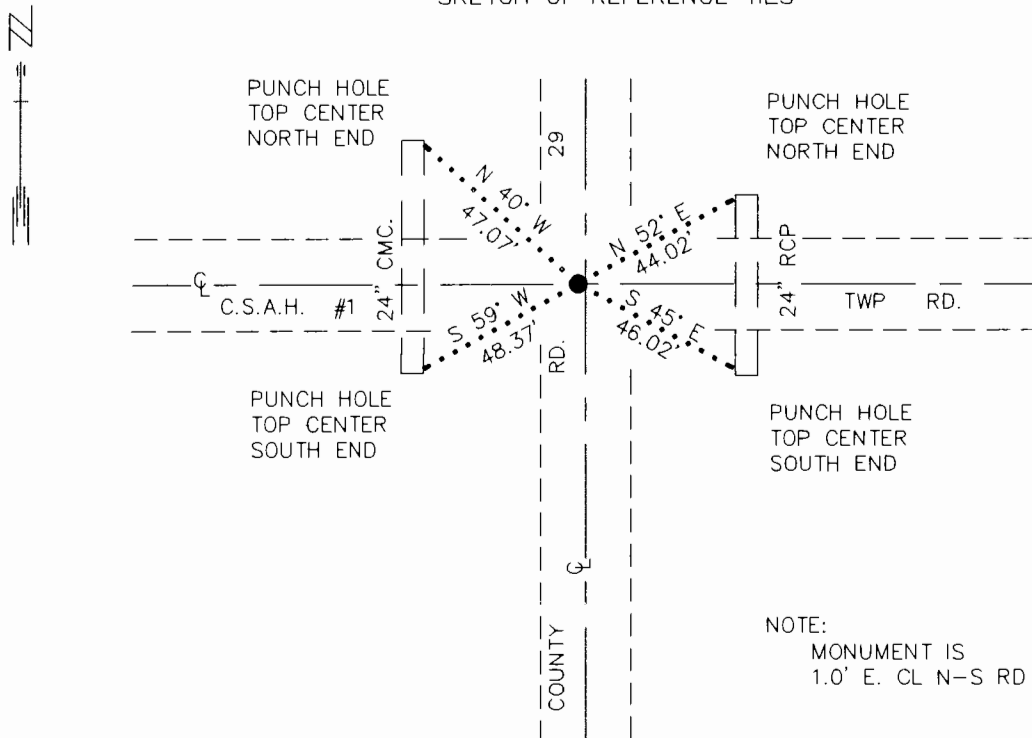
At the corner location shown on the sketch:

On 9/14/92 found a 1/2" IRON ROD, FLUSH  
DATE

left monument as found,  lowered monument,  removed monument (explain)

On \_\_\_\_\_ Placed a \_\_\_\_\_  
DATE

### SKETCH OF REFERENCE TIES



NOTE:  
MONUMENT IS  
1.0' E. CL N-S RD

1983 MURRAY COUNTY  
COORDINATE SYSTEM  
N = 110704.338  
E = 474347.801

BEARINGS OBSERVED WITH COMPASS

Statement of evidence relative to this corner location is on back of page. 10/7/92  
WMA01187.00.00.01

I hereby certify that this document and the data contained herein was prepared by me or under my direct supervision.

Lawell R. Pommeroy 10-26-92  
SIGNATURE DATE

Registration No. 17005

Land Surveyor,  Professional Engineer  
 County Surveyor,  County Engineer

OFFICE OF THE COUNTY RECORDER

County of MURRAY

I hereby certify that this document was filed in the Co. recorders office at \_\_\_\_\_ .M. on the \_\_\_\_\_ day of OCT 27 1992 A.D., 19\_\_\_\_

County Recorder James V. Johnson  
By \_\_\_\_\_, Deputy

DOCUMENT NO. \_\_\_\_\_

Northeast Corner Section 27, Township 105 North, Range 42 West

The DNR Bureau of Engineering contacted the following offices for information on this corner:

MN Secretary of State  
Murray County Recorder and Highway Engineer  
Moseng Land Surveying at Marshall  
Madsen Land Surveying at Fairmont

- 1861 The U.S. General Land Office notes, on file in the Secretary of State's Office, show the corner marked with a post, made mound with trench and pits as per instructions.
- 1931 Surveyor's Record Book A, on file in the County Recorder's Office, on page 353, contains a survey that states; "Stone fence cor 41.8 NE.-F cor 40.0 NW- F cor 42.5 SW". A distance of 2657.6 ft. is shown from this corner to the east quarter corner Section 22.
- 1931 Surveyor's Record Book A, on file in the County Recorder's Office, on page 372, contains a survey that states; "See Sec 23". The corner is shown to measure 2647.5 ft from the north quarter corner Section 27.  
This information is also on file in the County Highway Engineer's Office.
- 1969 An old record book, on file in the County Highway Engineer's Office, states placed a iron pin in mat. Found a 2 x 2 hub and placed a steel fence post above it. Three reference ties are shown.  
This information also appears in large record book that contains ties to government corners.
- 1992 September 14, the DNR Bureau of Engineering conducted a search for this corner and found a 1/2" iron rod, flush, in Co. Rd. #29. Searched for, but did not find the ties of record. Iron rod was found to measure:  
2658.17 ft. from the east quarter corner Section 22  
2649.00 ft. from the north quarter corner Section 27

Analysis of the available information led the DNR Bureau of Engineering to conclude that the found iron rod marks the location of the corner.